

Cathepsin E Polyclonal Antibody
Catalog # AP68865**Specification**

Cathepsin E Polyclonal Antibody - Product Information

Application	WB, IHC-P
Primary Accession	P14091
Reactivity	Human, Mouse, Rat
Host	Rabbit
Clonality	Polyclonal

Cathepsin E Polyclonal Antibody - Additional Information**Gene ID** 1510**Other Names**

CTSE; Cathepsin E

Dilution

WB~~Western Blot: 1/500 - 1/2000. Immunohistochemistry: 1/100 - 1/300. ELISA: 1/20000. Not yet tested in other applications.

IHC-P~~N/A

Format

Liquid in PBS containing 50% glycerol, 0.5% BSA and 0.09% (W/V) sodium azide.

Storage Conditions

-20°C

Cathepsin E Polyclonal Antibody - Protein Information**Name** CTSE**Function**

May have a role in immune function. Probably involved in the processing of antigenic peptides during MHC class II-mediated antigen presentation. May play a role in activation-induced lymphocyte depletion in the thymus, and in neuronal degeneration and glial cell activation in the brain.

Cellular Location

Endosome. Note=The proenzyme is localized to the endoplasmic reticulum and Golgi apparatus, while the mature enzyme is localized to the endosome

Tissue Location

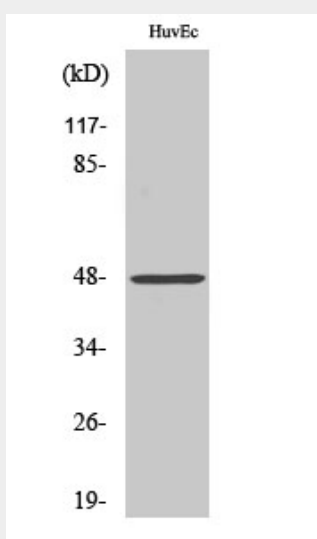
Expressed abundantly in the stomach, the Clara cells of the lung and activated B-lymphocytes, and at lower levels in lymph nodes, skin and spleen. Not expressed in resting B-lymphocytes

Cathepsin E Polyclonal Antibody - Protocols

Provided below are standard protocols that you may find useful for product applications.

- [Western Blot](#)
- [Blocking Peptides](#)
- [Dot Blot](#)
- [Immunohistochemistry](#)
- [Immunofluorescence](#)
- [Immunoprecipitation](#)
- [Flow Cytometry](#)
- [Cell Culture](#)

Cathepsin E Polyclonal Antibody - Images



Cathepsin E Polyclonal Antibody - Background

May have a role in immune function. Probably involved in the processing of antigenic peptides during MHC class II-mediated antigen presentation. May play a role in activation-induced lymphocyte depletion in the thymus, and in neuronal degeneration and glial cell activation in the brain.